



**The  
Emerald  
Alliance**

*for People, Nature and Community*

***A Whole Landscape  
Approach to Conservation  
in the Pacific Northwest***

***ACES Conference  
December, 2018***









SNOHOMISH

KITSAP

KING

PIERCE



# The Emerald Alliance for People, Nature and Community





# History/Origins of the Emerald Alliance

- Starts with the loss of open space
- Disconnect between growth management and conservation planning
- Projections of population growth by 2050

## Catalyst for urgent action:

- Declining health of Puget Sound
- Loss of farmland (55,000 since 1982-one quarter)
- Loss of tree cover: 2006-2013
  - ✓ 12,900 acres lost within the urban growth boundaries
  - ✓ 19,800 lost in rural areas



# Regional Growth Projections out to 2050

**Growth  
Per  
Hour**



Current growth in population and jobs per hour in the central Puget Sound region. *Source: PSRC, 2016*



# Multi-Benefit Business Case

At a regional scale:

Investments in open spaces and natural landscapes yield multiple benefits

CLIMATE CHANGE



BIODIVERSITY



SOCIAL EQUITY



HUMAN HEALTH



ECONOMIC HEALTH

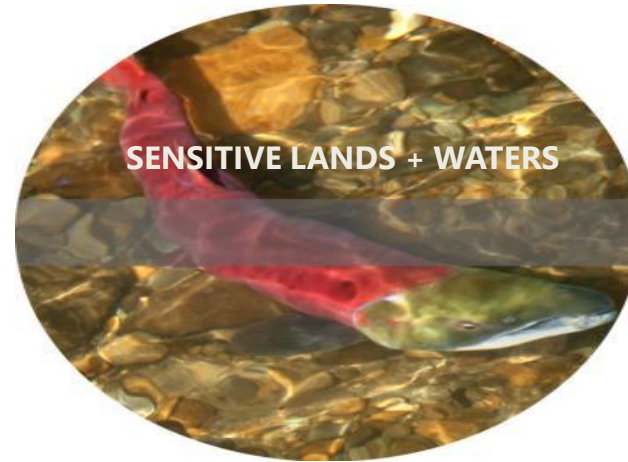




## Create a Shared Narrative:

- Identify the flow of benefits from open space
- Quantify the value of open space benefits and service
- Demonstrate open space's return on investment
- Inform and guide local land use decisions
- Attract new funding to conservation activity

# WHAT IS OPEN SPACE?



Green/Natural Infrastructure

# Regional Interconnected System



# Valuing and Prioritizing Open Space Services

Open Space Assessment Tool (OSAT): Prioritizing Investment in Open Space Protection at the Regional Scale



AIR



WATER



WORK



PLAY



ENERGY



MATERIALS



CULTURAL



AESTHETIC



FOOD



SHELTER



HEALTH



TRANSPORT



WASTE



DISASTER  
MITIGATION



EDUCATION



COMMUNITY

# Central Puget Sound Open Space Valuation

(Dollar value in thousands)

Service		Low	High
	Aesthetic	\$2,293,975	\$9,509,713
	Air	\$422,203	\$529,187
	Food	\$12,587	\$86,472
	Shelter	\$73,984	\$111,407
	Water	\$62,605	\$1,925,347
	Health	\$41,168	\$50,352
	Play	\$2,633,343	\$4,132,675
	Disaster Mitigation	\$1,860,499	\$4,194,473
	Raw Materials	\$23,279	\$155,093
	Waste	\$4,034,301	\$4,568,983
<b>Total</b>		<b>\$11,457,944</b>	<b>\$25,263,700</b>

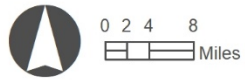
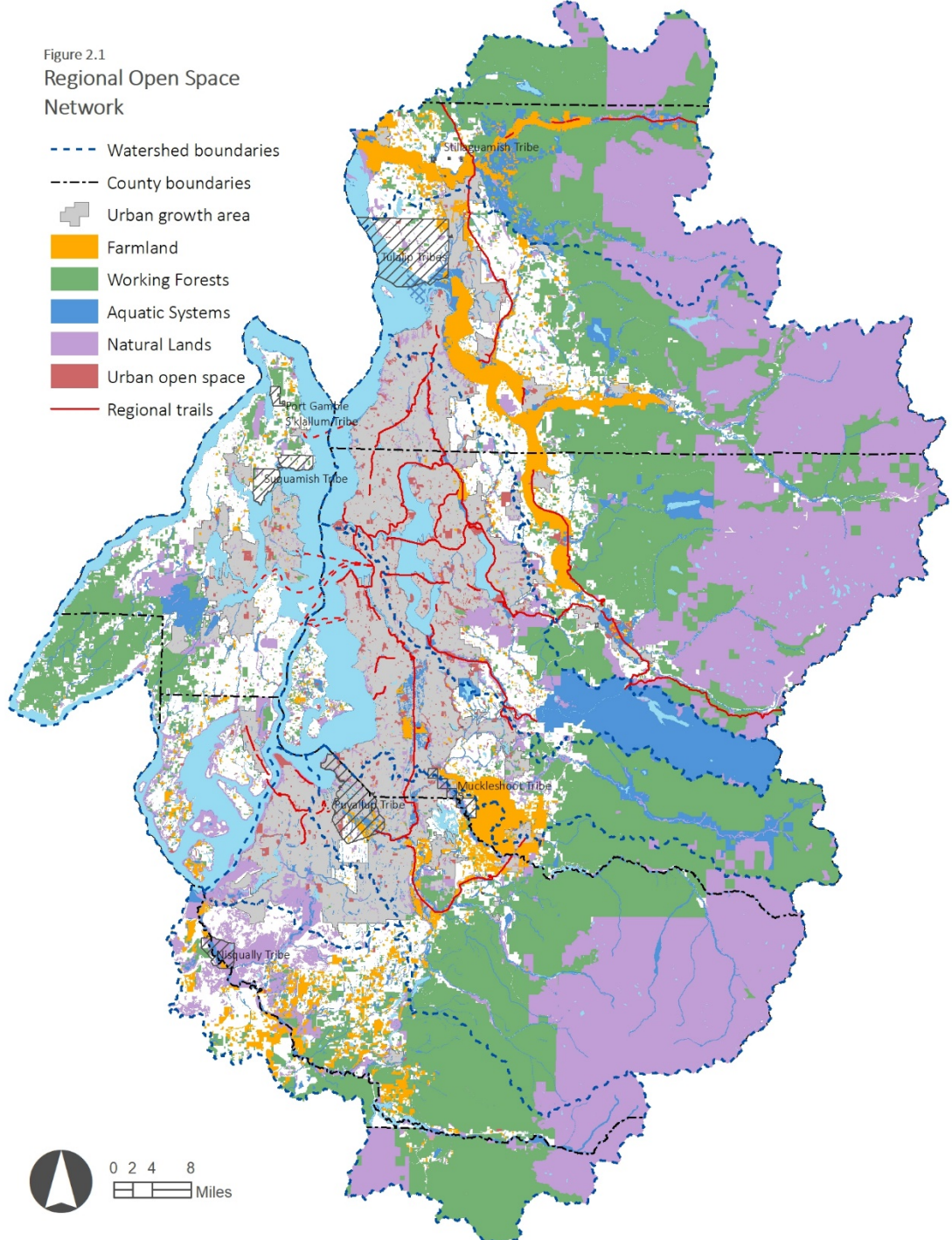


## **Key recommended actions to enhancing investments in open space/natural systems:**

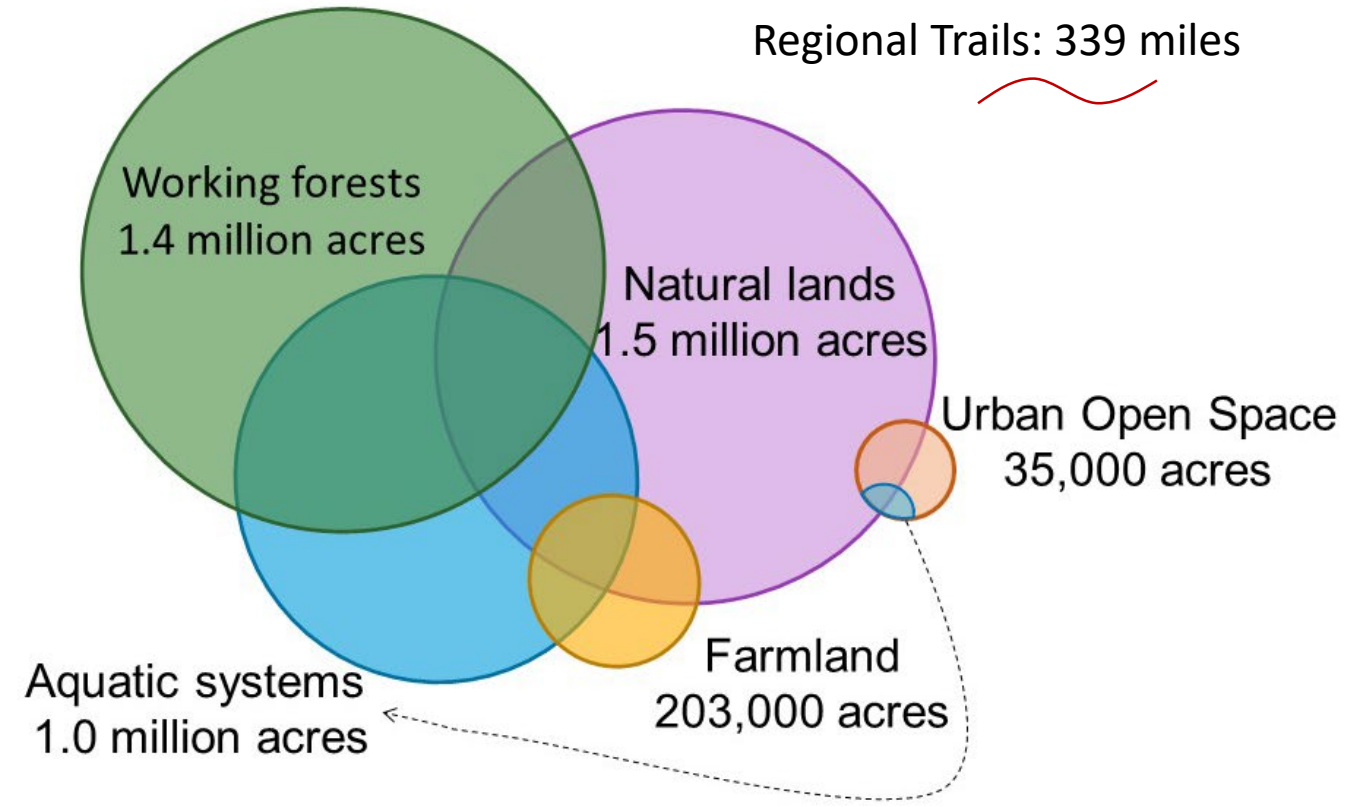
- **Creating a Dynamic Regional Vision**
- **Advancing Supportive Tools**
- **Establishing an Integrating Planning Structure**
- **Convening a Collaborative Forum**
- **Expanding & Leveraging Funding**

Figure 2.1  
Regional Open Space  
Network

- Watershed boundaries
- County boundaries
- Urban growth area
- Farmland
- Working Forests
- Aquatic Systems
- Natural Lands
- Urban open space
- Regional trails



# Regional Open Space Network





# Total Conservation Needs

<b>Watershed:</b>	<b>Farmland (Acres)</b>	<b>Working Forests (Acres)</b>	<b>Aquatic Systems (Acres)</b>	<b>Natural Lands (Acres)</b>	<b>Regional Trails (miles)</b>
5 - Stillaguamish	24,000	17,300	28,000	3,000	12
7 – Snohomish	30,100	26,600	21,700	12,700	46
8 – Cedar/Sammamish	2,300	2,500	5,600	9,100	40
9 – Green/Duwamish	6,900	5,500	6,600	7,700	43
10 – Puyallup/White	9,500	16,300	9,900	9,200	53
11 – Nisqually	26,600	38,100	8,900	16,300	35
12 – Chambers/Clover	240	260	1,800	3,200	13
15 - Kitsap	4,400	76,600	11,300	20,600	58
<b>Total</b>	<b>104,000</b>	<b>183,200</b>	<b>93,700</b>	<b>81,700</b>	<b>300</b>

**463,000 acres**

# Emerald Alliance: COLLECTIVE IMPACT



# VISION FOR THE EMERALD ALLIANCE

- Modeling a Collective Impact approach
- Providing a neutral platform
- Reducing fragmentation
- Building a more powerful movement
- Driving new funding into the sector

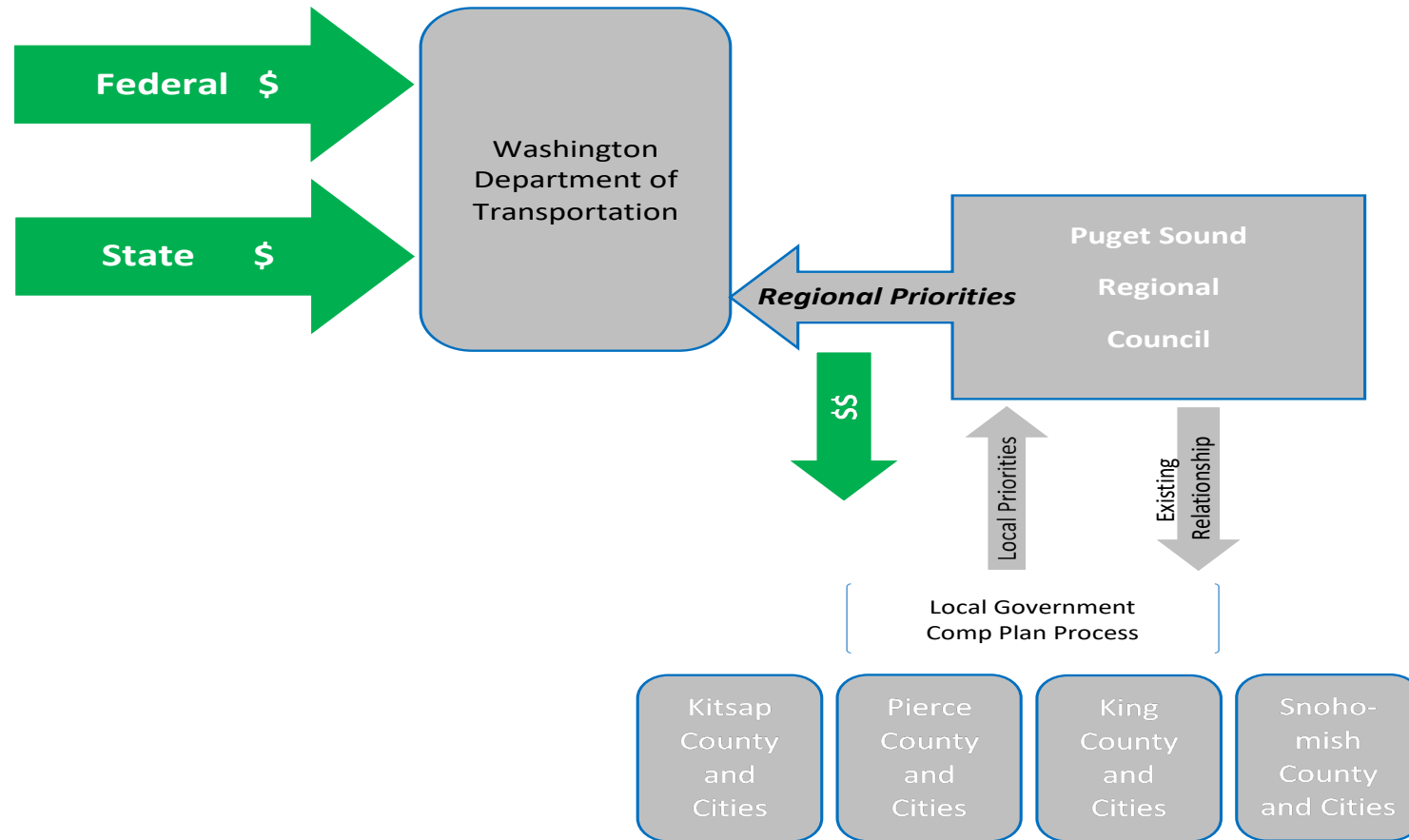
## Leading With:

- Equity/Inclusion know how
- Business sector engagement
- Creating compelling stories, messages, narratives
- Innovate within the financing approach



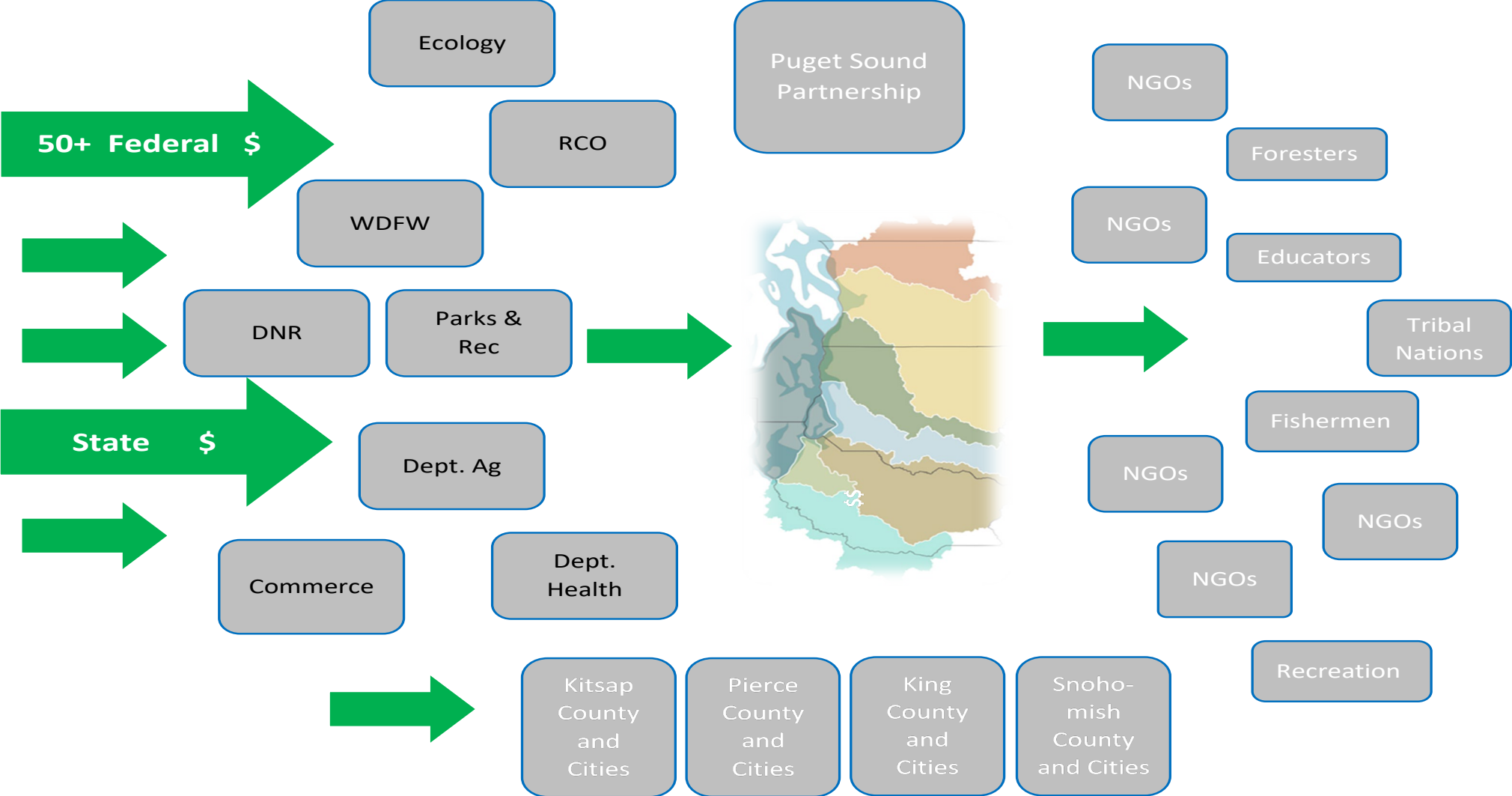
# EXPAND AND STREAMLINE FUNDING

## TRANSPORTATION INFRASTRUCTURE FUNDING PROCESS



# EXPAND AND STREAMLINE FUNDING

## EXISTING CONSERVATION FUNDING PROCESS

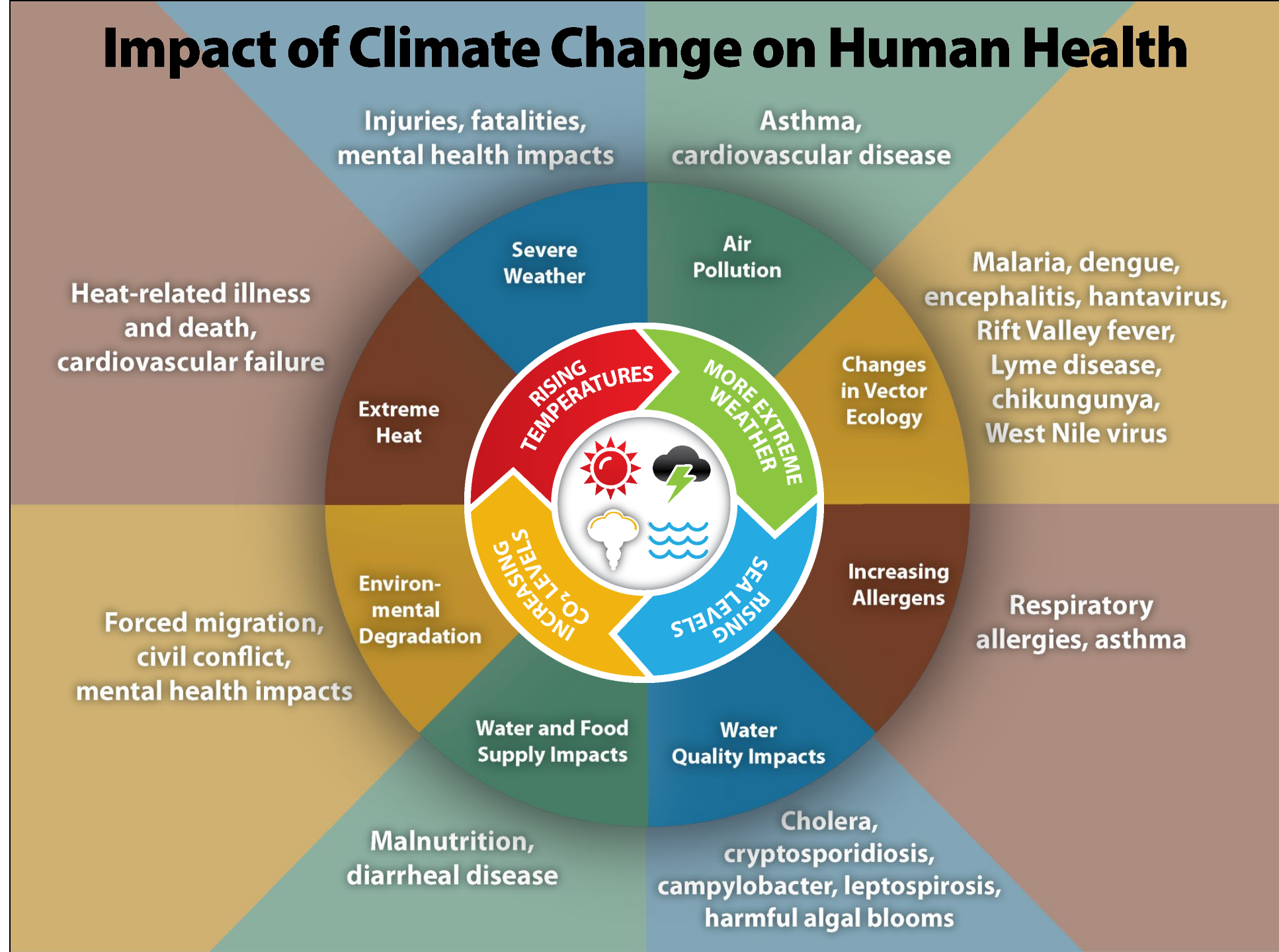




# King County Land Conservation Initiative



# Impact of Climate Change on Human Health





# Stormwater Management Park-Tacoma





The  
Emerald  
Alliance

*for People, Nature and Community*

Thank you!

Tracy Stanton

[tracy@emeraldalliancencw.org](mailto:tracy@emeraldalliancencw.org)

[www.emeraldalliancencw.org](http://www.emeraldalliancencw.org)